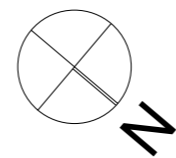
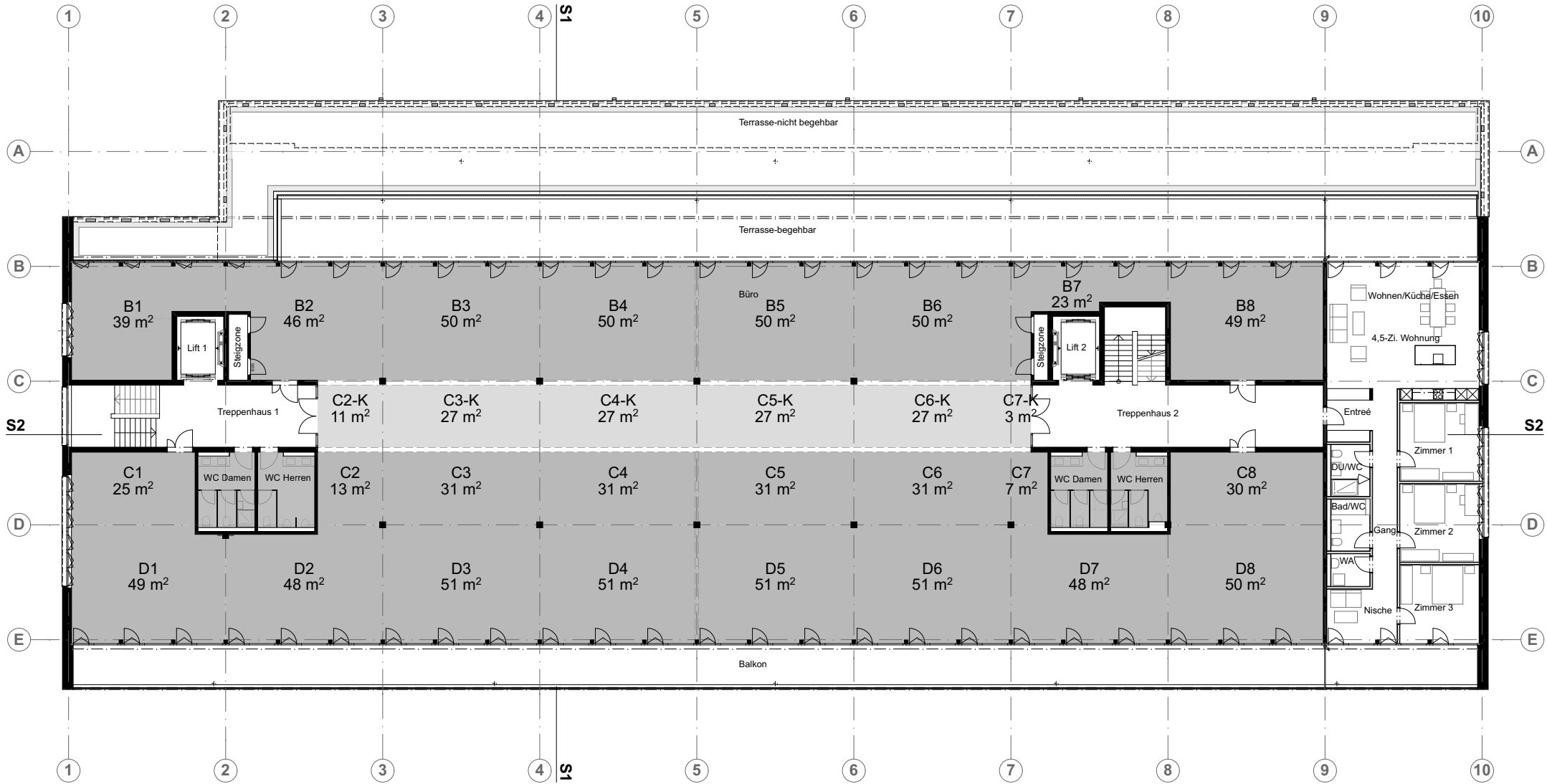



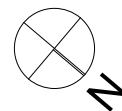


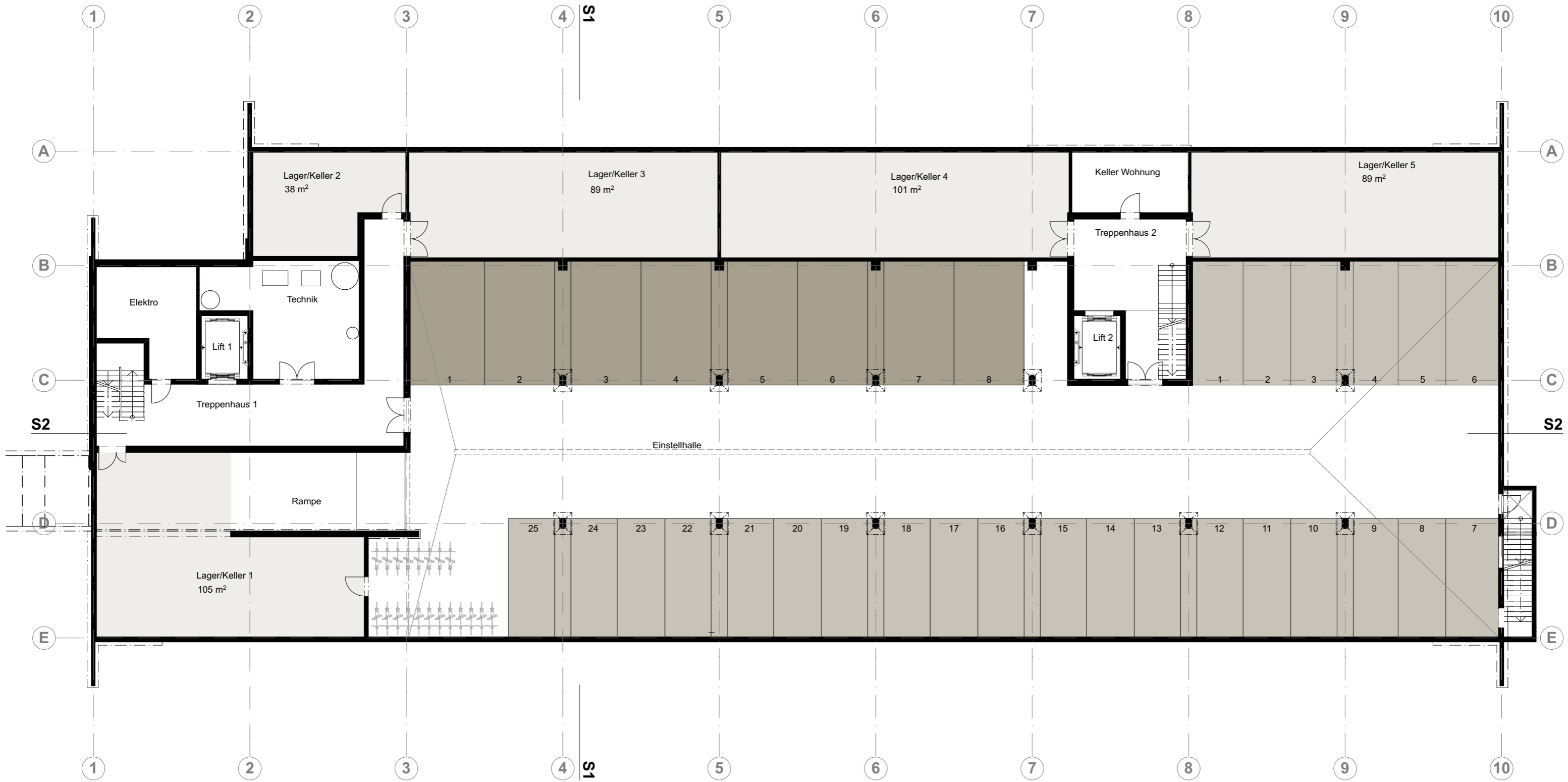
Mietfläche Zwischenboden 473 m²

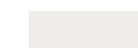




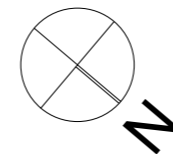


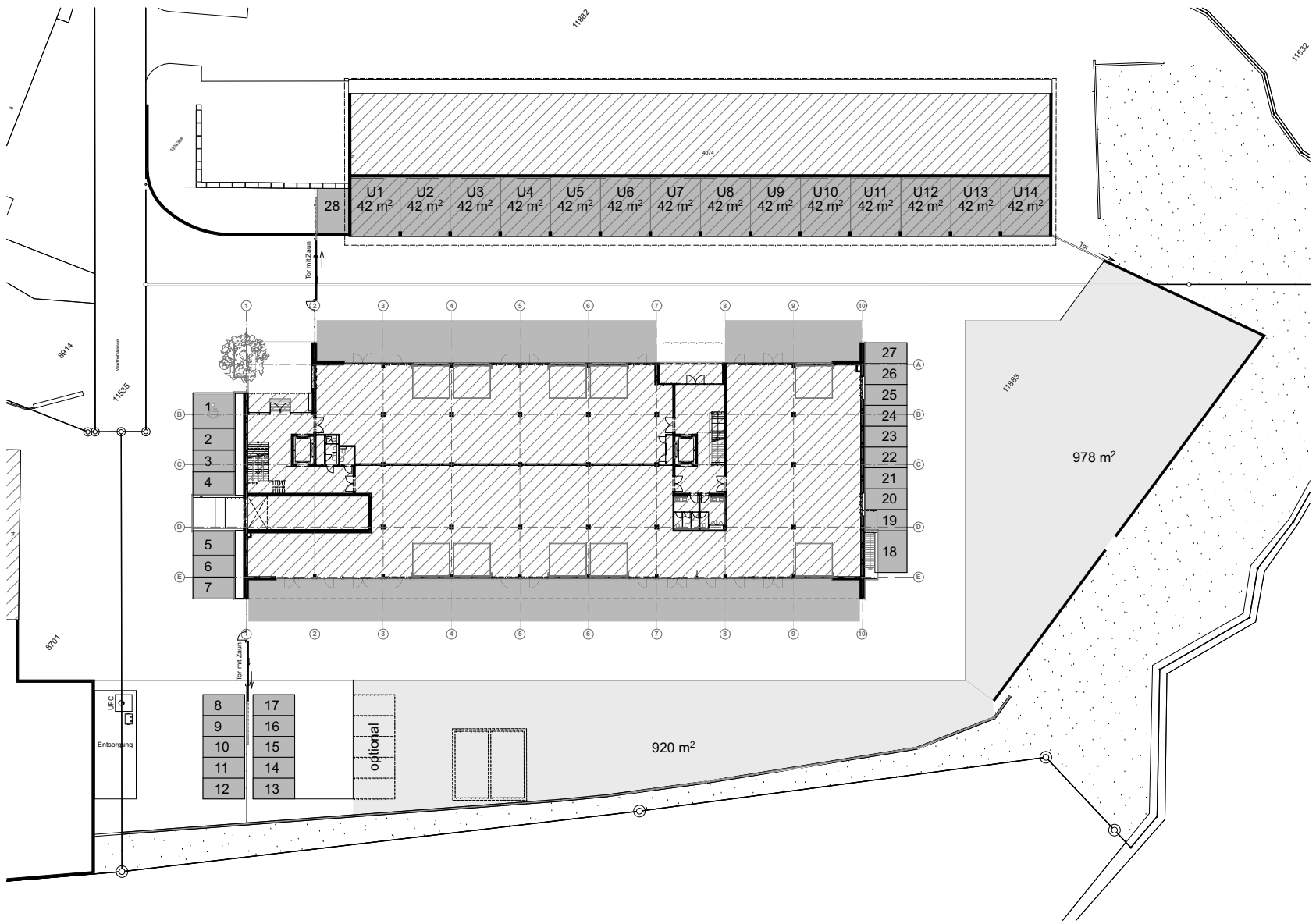
	Korridorfläche	122 m ²
	Mietfläche Büro/Gewerbe	955 m ²
	WC-Anlagen	





	Mietfläche Lager/Keller	422 m ²
	Mietfläche PW-Parkplätze	25 Stk.
	Mietfläche LW-Parkplätze	8 Stk.





- Hartbelag
- Mietfläche Aussenlager Kiesbelag
- Parkplätze / Unterstand / Mieterflächen

